

Terminal Server Connectivity Guide (RDC)

Please follow the instructions listed below to connect to the IHP Terminal Server. These instructions are for all users connecting from a remote network.

If you have any questions on connectivity, or general access, please contact your respective technician at your earliest convenience.

Sincerely,

The IHP Computer Technical Team

Step by step guide to Terminal Server connectivity:

Prerequisites:

- Latest version of the Remote Desktop Client:
 - Windows XP and Windows Vista have RDC clients built-in.
 - Mac OS X – See installation instructions below.

Mac OS X Client Installation:

The Macintosh RDC Client must be installed onto the local hard drive. To install the Mac OS X RDC client, please complete the following:

Download:

1. Open Safari or Firefox, and go to the following page: <http://www.microsoft.com/mac> -> Downloads -> Remote Desktop.
2. Download the latest version of Remote Desktop Client for Mac

Installation:

1. Once the .dmg file download has completed, please mount the image file.
2. Drag the *Remote Desktop Connection* folder from the mounted image into Applications.

Connecting to the IHPNET Terminal Server:

After installing the Remote Desktop Client, you must now configure the RDC client to connect to the IHP Terminal Server:

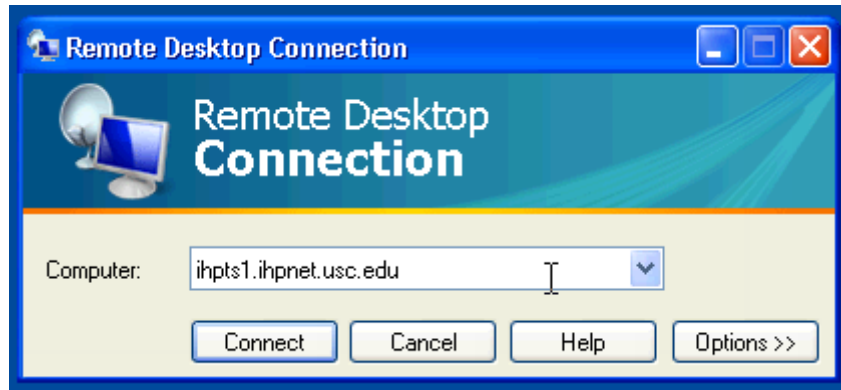
Windows XP / Windows Vista

1. Open the RDC client by going to:
Start -> All Programs -> Accessories -> Communications -> Remote Desktop Connection.

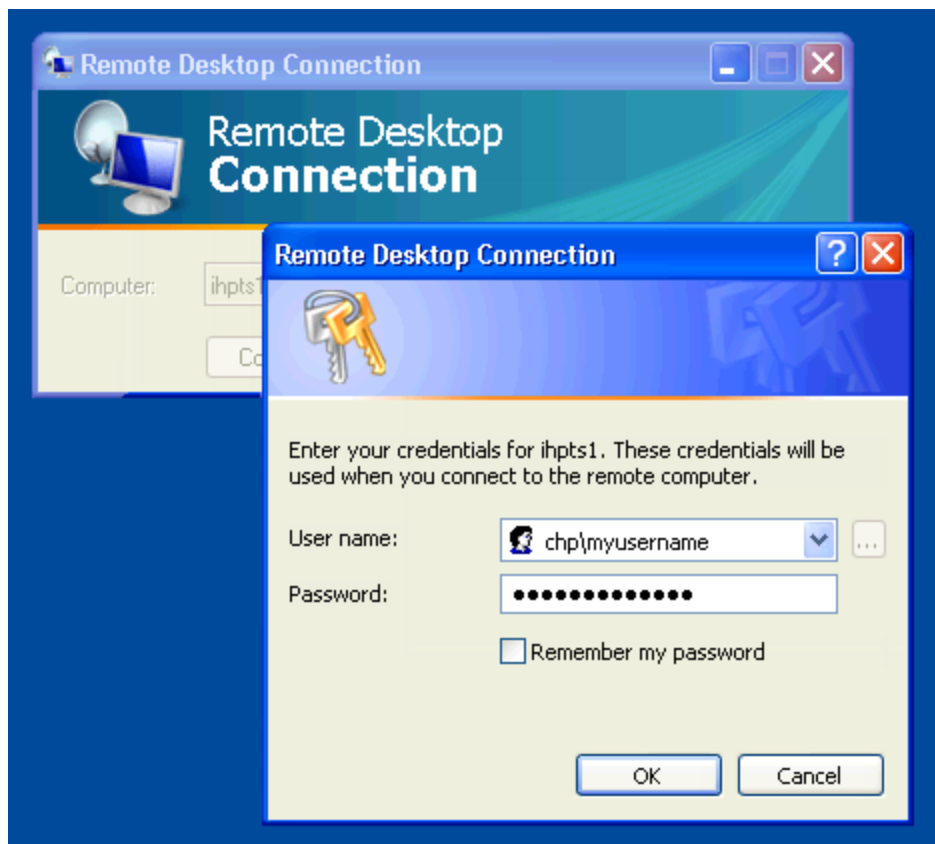
or

Start -> All Programs -> Accessories -> Remote Desktop Connection.

2. Type **ihpts1.ihpnet.usc.edu** in the *Computer* bar, and click **Connect**.



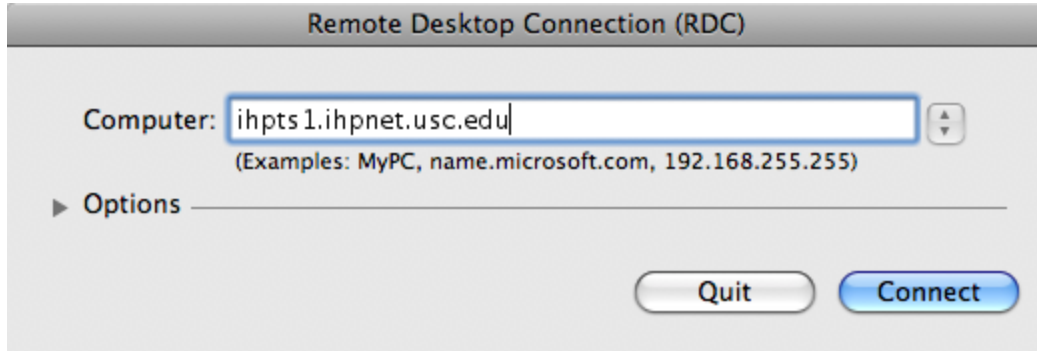
3. Use the following credentials to login:
 - User name: **chp\myusername**
 - Password: **your CHP password**



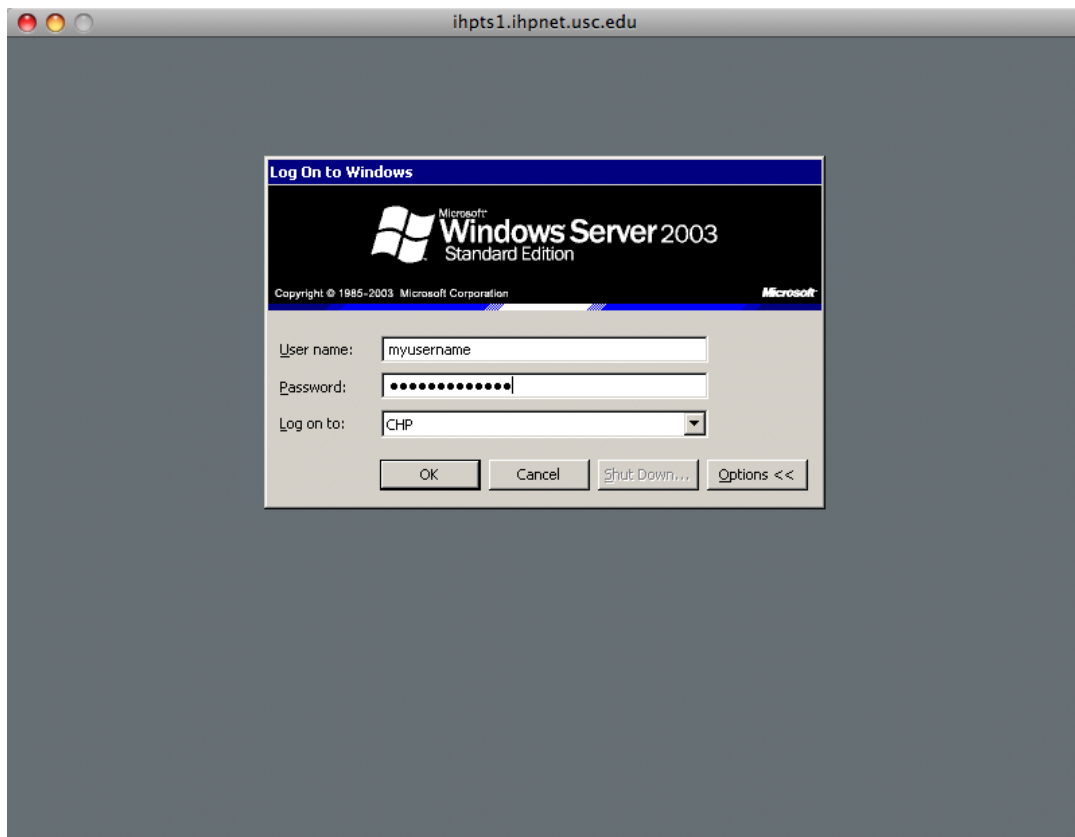
4. Click **OK**.

Mac OS X

1. Open the RDC client by going to **Applications -> Remote Desktop Connection -> Remote Desktop Connection**.
2. Type **ihpts1.ihpnet.usc.edu** in the *Computer* bar, and click **Connect**.



3. Use the following credentials to login:
 - User name: myusername
 - Password: your CHP password
 - Log on to: CHP



4. Click **OK**.

Completion:

Now that you have completed the installation and configuration for the Remote Desktop Connection, you may use the remote connection to access file server data and Microsoft Office 2003.

If you have any problems with configuration or connectivity, please feel free to contact the I.T. Support Team at your earliest convenience.